

EMPIRE
DEVELOPMENTS



Where innovation takes flight, luxury soars.

Dubai Science Park

welcomes

**EMPIRE
LIVINGS**

SAY GOODBYE TO DAY-DREAMING

welcome

DREAM DAYS OF LUXURY



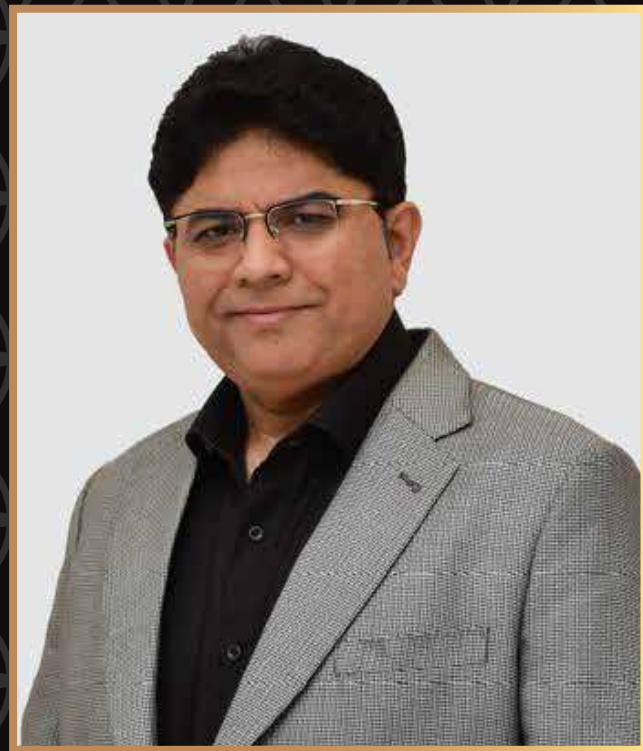
A STANDING
D R E A M

An intelligently chosen 3-side corner plot at Dubai Science Park, just a 1-minute drive from Umm Suqaim Road and steps away from a future Metro stop sets the stage for Empire Developments' stellar project combining investment and residence for its partners. The high-rise features expansive parking on 2 basement floors, retail showrooms on the ground floor, 3 podium floors with a parking facility on each, one dedicated floor for world-class amenities and 14 floors offering different types of creatively designed apartments with a private pool or without pool options. Delivering the best panoramic vistas of Dubai Science Park

EMPIRE

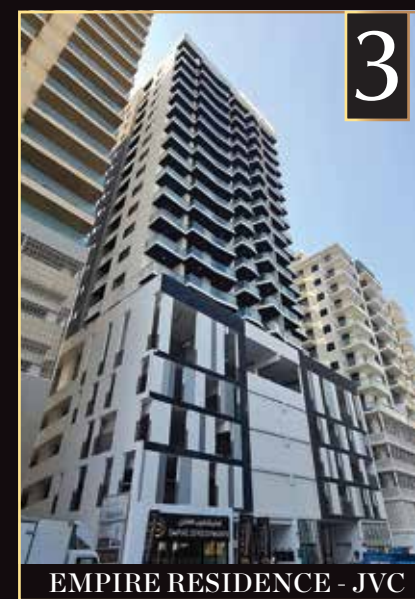
DEVELOPMENTS

Thank you for your confidence. Introducing Empire Livings by Empire Developments, a magnum opus in Dubai Science Park's prime location. Experience unmatched luxury with our straight 1% plan! We hope you will continue to appreciate our efforts and invest with confidence in Empire Livings, just as you did with our previous project, Empire Estates.

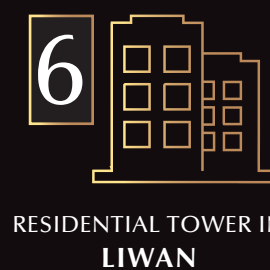


MR. KAMRAN GHANI
Chairman / Founder - Ghani Holdings

CRAFTING HOMES
 CREATING
Legacies



U P C O M I N G





A STORY OF
SUCCESS



EMPIRE
DEVELOPMENTS





PLAZZO
RESIDENCE

JUMEIRAH
VILLAGE TRIANGLE

PLAZZO
HEIGHTS

JUMEIRAH
VILLAGE CIRCLE

EMPIRE
RESIDENCE

EMPIRE estates

EMPIRE
LIVINGS

DUBAI HILLS MALL

MEDICLINIC PARKVIEW HOSPITAL

DUBAI BUTTERFLY GARDEN

DUBAI MIRACLE GARDEN

FUTURE METRO STATION

ENTRANCE

*PRESENTATING
DUBAI'S FINEST LIVING*

DUBAI SCIENCE PARK



05

MINUTES
DUBAI HILLS MALL



15

MINUTES
MALL OF EMIRATES



15

MINUTES
BUSINESS BAY



15

MINUTES
PALM JUMEIRAH



20

MINUTES
DUBAI MARINA



25

MINUTES
DUBAI AIRPORT

EMPIRE LIVINGS

DUBAI SCIENCE PARK



EMPIRE
LIVINGS
DUBAI SCIENCE PARK

dubai's skyline
YOUR PERSONAL
POOLSIDE SANCTUARY

THE
FINEST ADDRESS OF
DUBAI SCIENCE PARK
AWAITS...

The Empire Livings project in Dubai Science Park is a testament to architectural elegance and modernity. With its breathtaking elevation, crafted using the latest durable materials and meticulously chosen colour combinations, this development stands as a beacon of contemporary design. It promises not only unparalleled beauty but also exceptional value, setting a new standard for unique living spaces. Each detail has been thoughtfully considered to ensure that Empire Livings is not just a place to live, but a place to truly call home.



202 UNITS

14 STUDIO
WITH POOL

56 STUDIO
WITHOUT POOL

37 1BHK
WITH POOL

89 1BHK
WITHOUT POOL

6 1 BED DUPLEX
WITH POOL

meticulously
CRAFTED
LUSTROUS
COPPER ARCH ICON
facade

DUBAI SCIENCE PARK

EMPIRE
LIVINGS

RETAIL 01

RETAIL 02

RETAIL 03



SECURE SPACES AND
SCENIC SURROUNDINGS

Experience ultra-modern spacious parking spaces on 5 floors including Basements 1 and 2, and Podiums 1 to 3. All offer smart, secure, and hassle-free parking and enjoy dedicated reserved spots that redefine convenience and peace of mind, each time and every time you park your vehicle.



EMPIRE
LIVINGS

DUBAI SCIENCE PARK

MAJESTIC
ONYX ASCENT

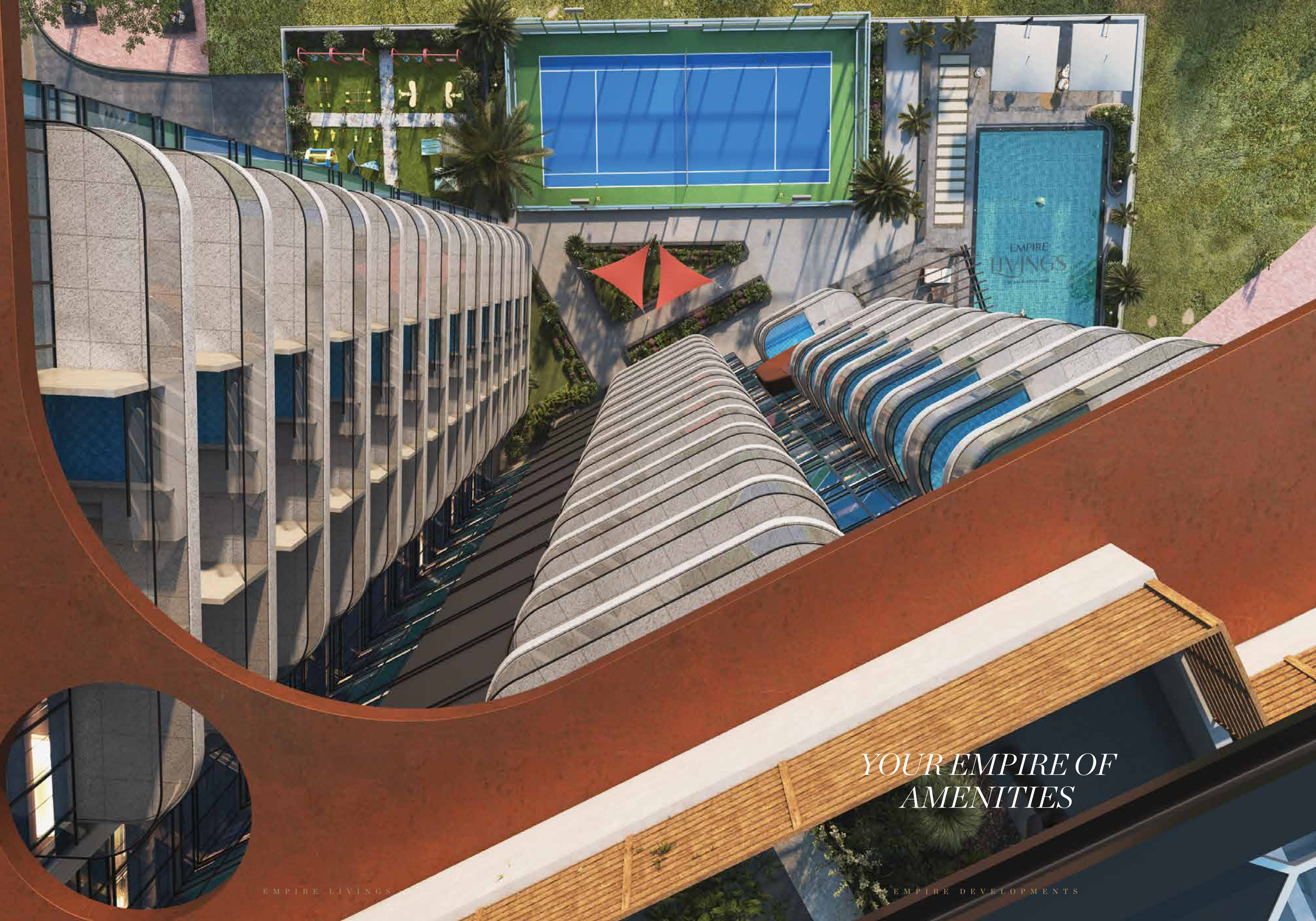
Step into our stunning double-height reception lobby, a fusion of contemporary design and architectural finesse using state-of-the-art materials. Enjoy a welcoming, mood-lifting ambience, a lift lobby with 4 elevators, and a beautifully designed waiting area.



REGAL
MARBLE
PATHWAYS

Welcome to Empire Livings, the epitome of refined urban next-century living. Step into a world where creatively selected materials merge to form an unmatched luxurious combination. Experience a princely feeling as you pass through the corridors, showcasing unparalleled grandeur and top-quality finishes. Each detail has been meticulously chosen to create a fantastic and extraordinary appearance, reflecting the ultimate in style and sophistication.





*YOUR EMPIRE OF
AMENITIES*

AN ENTIRE FLOOR OF

30,000+ SQ. FT.
DEDICATED FLOOR FOR
AMENITIES

SWIMMING
POOL



SITTING AREA



GYM



PADEL TENNIS



CO-WORKING
SPACE



INDOOR GAMES



OUTDOOR CINEMA



KIDS' PLAY
AREA



YOGA ROOM



SAUNA



STEAM





CO-WORKING SPACE

INDOOR GAMES

SITTING AREA

SAUNA

STEAM

YOGA ROOM

GYM

SWIMMING POOL

OUTDOOR CINEMA

KIDS' PLAY AREA

PADEL TENNIS

full-floor
LUXE
AMENITIES
experience



AQUA
Jewel
IN THE SKY







The fantastic outdoor padel tennis court, open-air yet secluded, is exclusively designed for residents of this high-end residential project, offering a luxurious playing experience.

AGAIN
AGAIN
AGAIN
GAIN
GAIN

THIS IS
MY
HAPPY
HOUR

NO PAIN
NO GAIN

BRAVE

Shaping up

YOUR LIFE AND YOU!

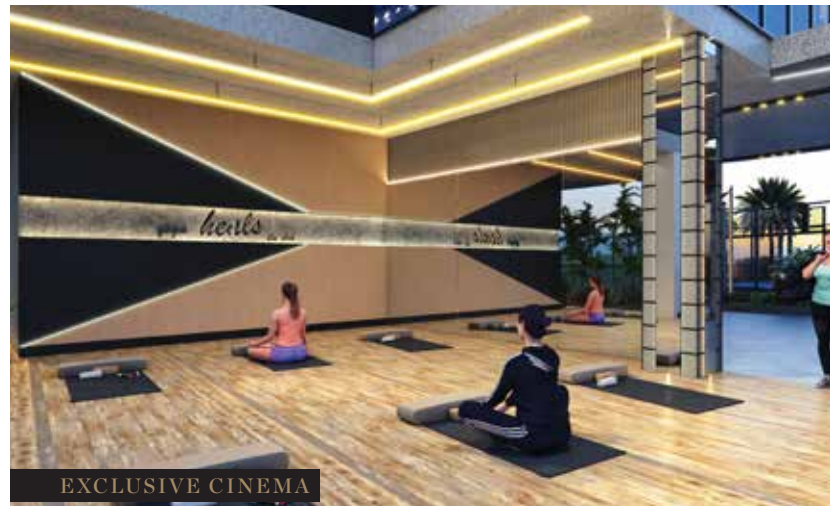
LUXE
LIFESTYLE HUB



CO-WORKING AREA



PLAY AREA



EXCLUSIVE CINEMA



SITTING AREA



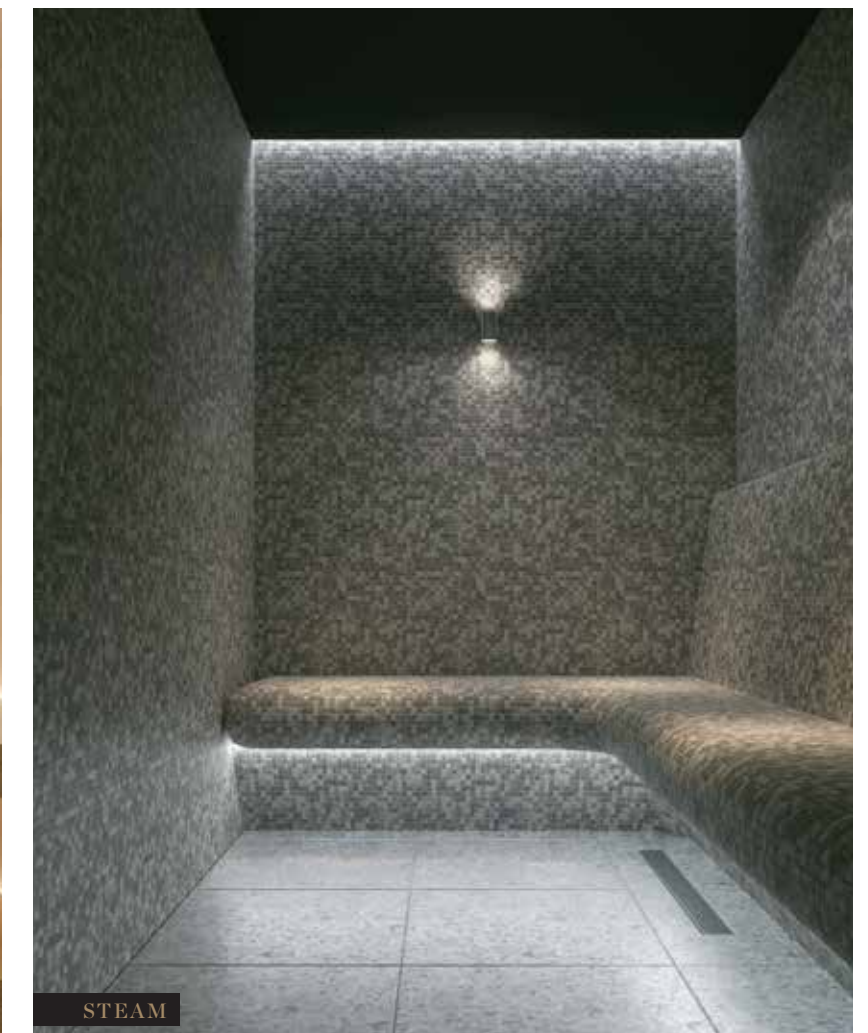
KIDS' PLAY AREA



YOGA SPACE



SAUNA



STEAM

The world-class residential facilities also feature a co-working area with high-speed internet and ergonomic seating, a safe kids' play area, an exclusive cinema fostering communal bonds, a serene yoga space for mindfulness, and a sitting area enhancing resident connections.

ELEVATED
EXTRAVAGANCE



MAKE
EVERY SUNSET
AN OUTING



ROOFTOP SOLAR PARK



WALKING TRACK



BBQ AREA



LAKE WALK



ROOFTOP
*SOLAR
PARK*



ZEN GARDEN



HALF BASKETBALL COURT



WATERFALL

ROOFTOP
THE PERFECT
BLEND OF

*relaxation
&
recreation*

HALF BASKETBALL COURT

WALKING TRACK

LAKE WALK

BBQ AREA

WATERFALL

KIDS PLAY AREA

ZEN GARDEN

EMPIRE LIVINGS

DUBAI SCIENCE PARK

ECO-CONSCIOUS
GREEN ENERGY



The Solar Park in Empire Living symbolises a groundbreaking fusion of sustainability and urban life. Harnessing the sun's power, this innovative development reduces carbon footprints, offers green spaces, and sets a new standard for eco-conscious city planning.

A WALKWAY TO HEALTH



EMPIRE'S BBQ BLISS ZONE



ZEN ESCAPES



SERENE LAKE WALK



OPULENT AMBIENCE



PERFECT LEISURE



EMPIRE
LIVINGS
DUBAI SCIENCE PARK

DISCOVER
UNMATCHED
livings

Empire Livings is crafted for your lifestyle, offering luxurious apartments of different types that suit your needs and requirements including studio apartments, cosy one-beds, standard one-beds, and stylish one-bedroom duplexes. Some apartments feature secluded terrace pools too. Live your way at Empire Livings!



EMPIRE
LIVINGS
DUBAI SCIENCE PARK

1
BED
DUPLIX

EMPIRE LIVINGS











The contemporary, fully-equipped kitchen features wall-sized glass windows that offer stunning views of the large terrace of your apartment that also offers your very own secluded sparkling blue swimming pool.

EMPIRE LIVINGS

STYLISH DUPLEX LIVING



Sophisticated living with sleek modern design and urban convenience.

EMPIRE DEVELOPMENTS

VIEW - INFUSED
CULINARY HAVEN



Cooking for your loved ones has never been this enjoyable.



The chic and vogueish bathroom is with top-quality branded fixtures and fittings, ensuring a luxurious experience.



1-Bed Duplex apartments

offer a spacious terrace with a sparkling swimming pool.
Enjoy unparalleled relaxation.

EMPIRE
LIVINGS
DUBAI SCIENCE PARK

1
BED
APARTMENT

EMPIRE LIVINGS

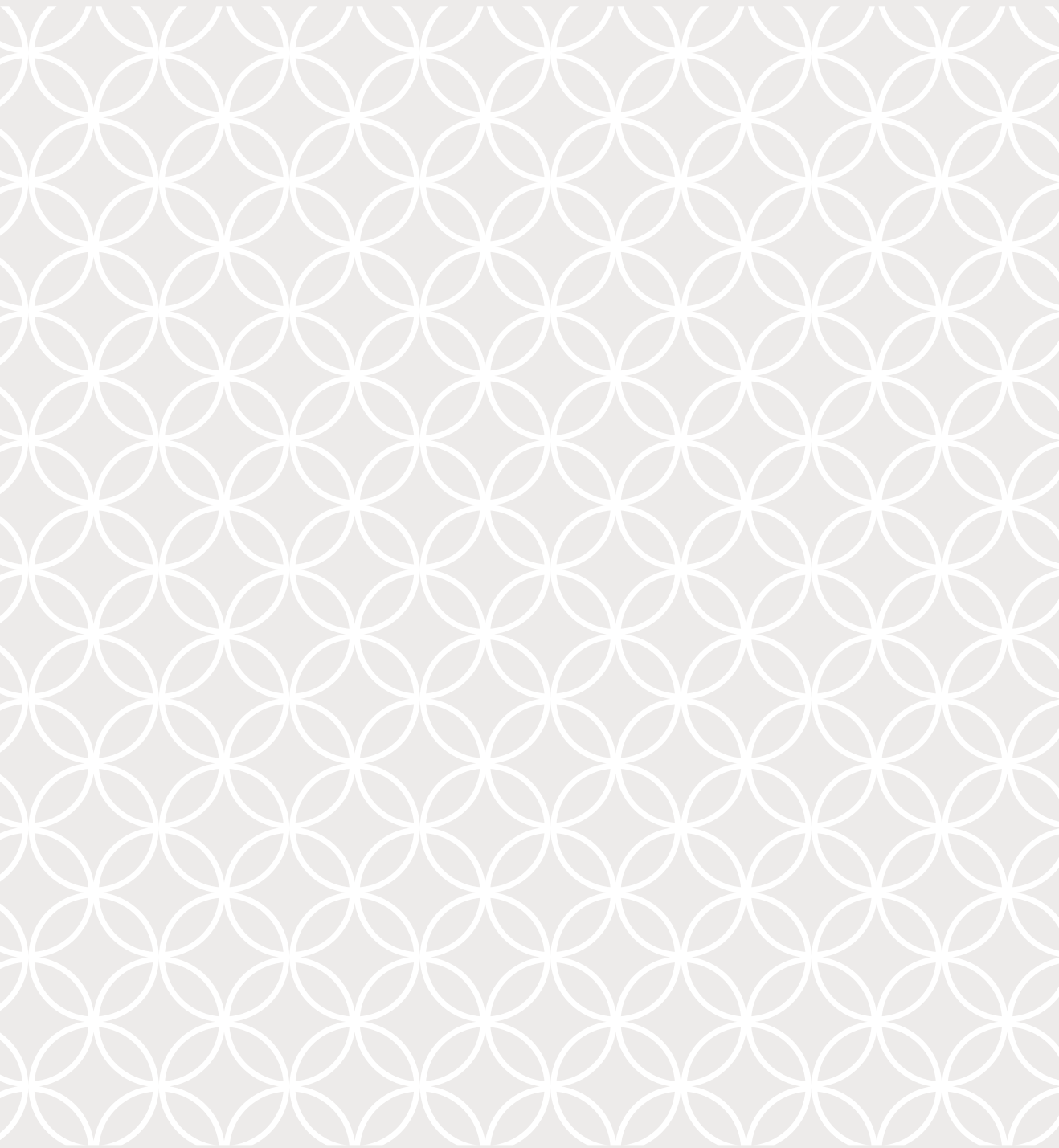


EMPIRE DEVELOPMENTS



SKYLINE SERENITY

The contemporary lounge of your stylish apartment features expansive wall-sized glass windows, offering breathtaking city views, while the serene master bedroom ensures a calm, peaceful sleep, providing the perfect urban sanctuary.





STYLISH LOFT HAVEN

Contemporary living in a one-bedroom apartment, offering elegant simplicity, functional spaces, and easy access to urban amenities.



EMPIRE
LIVINGS
DUBAI SCIENCE PARK

1
BED
COZY

EMPIRE LIVINGS



EMPIRE DEVELOPMENTS

UPSCALE STYLISH
LIFESTYLE

The charming one-bedroom apartment radiates coziness, with warm decor, intimate spaces, and all the comforts of home in a compact layout.

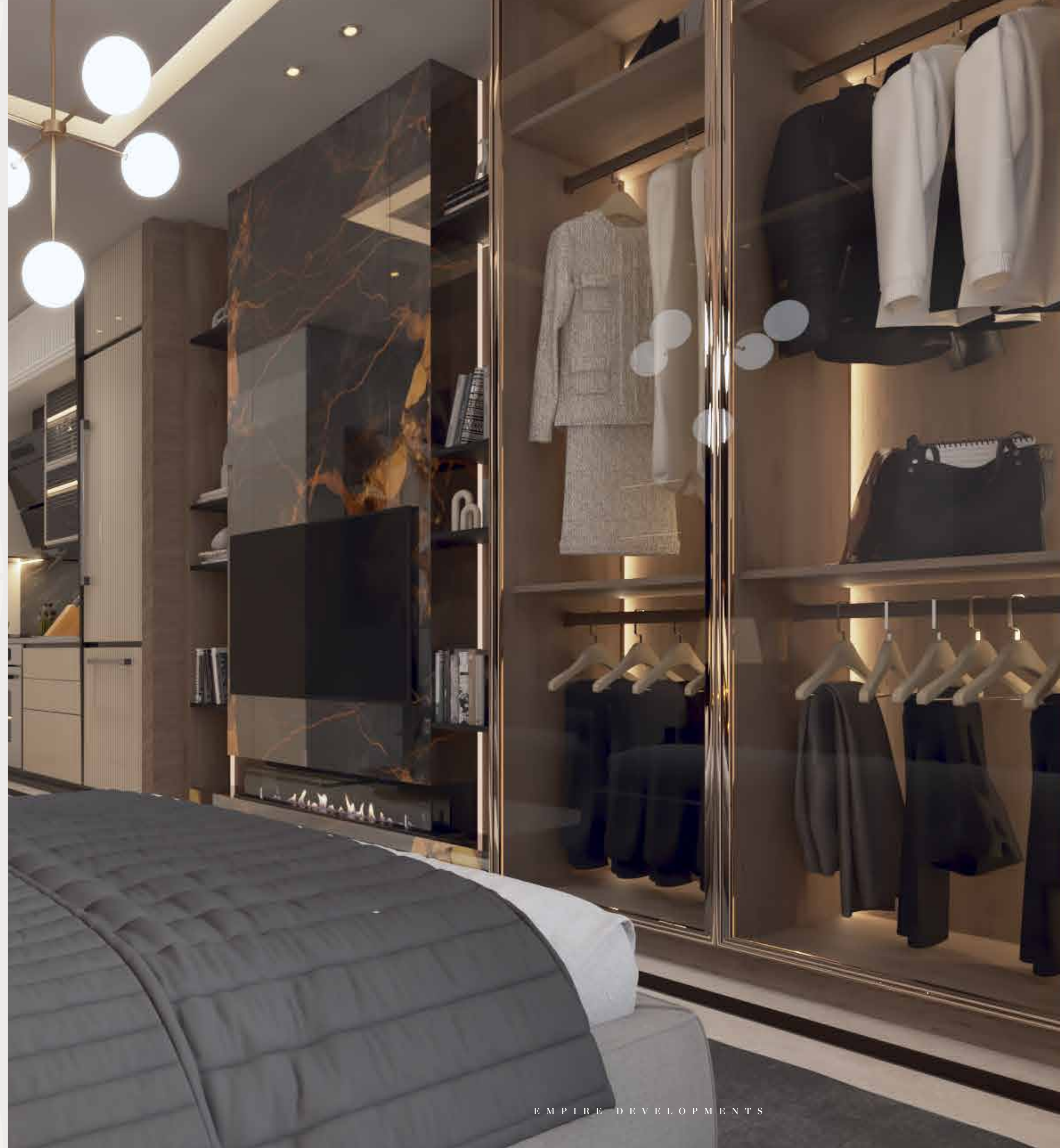




CITY CHIC APARTMENTS

EMPIRE
LIVINGS
DUBAI SCIENCE PARK

STUDIO





TRENDY
URBAN ABODE



Enjoy efficient living in this studio apartment, where smart design maximizes space, creating a cozy haven with modern convenience.

EMBRACE
THE FUTURE OF

urban

LIVING